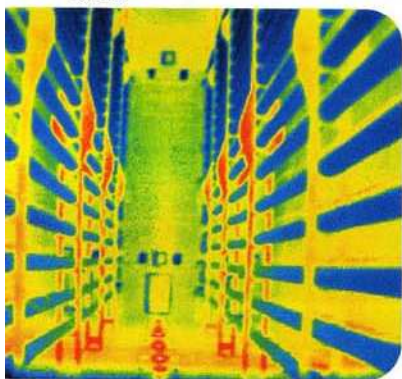


## Boiler shots

The new Thermo Tracer TH7102WB infrared camera from **Metrum Information Storage** is purpose-built for the boiler and furnace industry and has specialised IR filtering capabilities, radiation shield and protective window assembly.

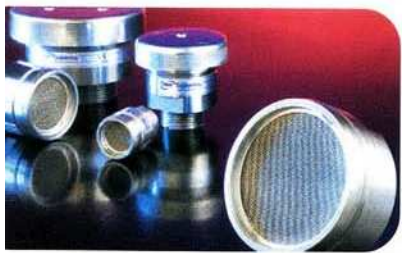
The camera 'sees' through the interference from combustion flames and accurately measures the temperature of the tube walls inside a furnace or boiler. It is a useful maintenance tool as there is no need for the furnace to be closed down and cooled.

Designed for one-handed point-and-shoot operation, it comes in a metal case, is battery operated and stores images and data to PCMCIA cards.



**ENTER 373** Tel: 0118 973 3000  
ipsearch.com/enquiry

## Flame arrest



**Elmac Engineering** has introduced a flame arrester for applications that require a simple, economical, lightweight solution.

ATEX compliant, the Elmac SVE is installed at the end of a pipeline or on an atmospheric vent from vessels where flammable gases or vapours may be present. It stops transmission of accidentally ignited flames or explosions from an external source without inhibiting process gas flow.

Features include: sizes from 10 to 50mm nb, suitability for gases with MESH  $\geq 0.65$ mm (gas group IIB3), carbon or stainless steel construction, BSP/NPT screwed connections and adaptors for flanged connections.

**ENTER 374** Tel: 01352 712058  
ipsearch.com/enquiry



Levels of ammonia in industrial effluents can be checked quickly with a handheld photometer developed by **Palintest**. Samples can be taken from any point in the treatment process and tested in a couple of minutes.

The meter accurately measures ammonia across the full spectrum of normal regulatory levels, helping

## ATEX mixers

**Chemineer** believes it is one of the first makers of mixers and agitators to meet the ATEX Directive 94/9/EC Zone 0 for equipment and protective systems for use in potentially explosive atmospheres.

Compliance with the directive gives peace of mind to companies using Chemineer's DT, GT and HT mixing equipment in industries such as chemical, water, food and pharmaceutical.

ATEX Zone 1 adherence has been achieved by the XP, MR, HS and Greerco high shear mixers.

The company has also achieved

## Photometer simplifies ammonia measurement

to ensure waste waters have ammonia levels within Discharge Consent limits. Used in conjunction with a specially designed reagent dispenser, performing the test is simple, even in extreme conditions such as strong winds or heavy rain.

Based on the standard Nessler method, the first reagent is supplied in a Tubetest sealed test tube, the second in the dispenser. After the sample is added to the first reagent, the second reagent is added from the dispenser. After 1min the tube is inserted in the meter and the two buttons pressed. The ammonia concentration is then displayed on a 10mm LCD.

**ENTER 375** Tel: 0191 491 0808  
ipsearch.com/enquiry



compliance with ASME-BPE quality that demonstrated an exemplary standard for manufacturing high purity equipment suitable for critical industries.

Chemineer was also one of the first designers and manufacturers of mixers and agitators to achieve the stringent requirements of the EU's new Pressure Equipment Directive.

**ENTER 376** Tel: 01332 363175  
ipsearch.com/enquiry

## Software helps reduce leaks

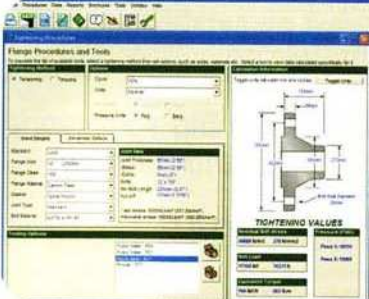
Reducing hydrocarbon leaks from bolted joints on installations is increasingly a priority for the oil, gas and engineering industries. Most often because bolts have been

figures, approved procedures and a system for recording work.

A software program, Informat Professional, has been developed by **Hedley Purvis** to meet these requirements.

Features include a joint register, work pack matrices and the ability to export information into Excel or other formats. It makes calculations for standard and non-standard joints and for exotic flange materials.

A specials section allows calculations to be made for items such as heat exchangers.



incorrectly assembled and installed. Controlled bolt tightening requires competent staff, correct and traceable torque or tensioning

**ENTER 377** Tel: 01270 886214  
ipsearch.com/enquiry



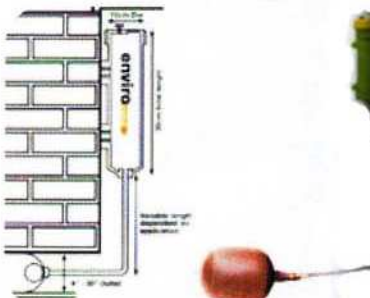
## Bespoke unit

**Amarinth** is to supply 10 bespoke pumping units to Pakistan Petroleum (PPL) in Karachi. The gas producer chose Ranhill as its contractor for a USD 21M engineering, procurement and construction project. Amarith secured the pump order from Ranhill for its expertise in this field and its ability to deliver bespoke pumps to very tight deadlines.

The pumps will deliver LPG from the refinery to the bottling plant and need to operate at very high suction pressure. Amarith designed the pumps to handle the resulting thrust that would otherwise have placed additional strain on bearings and brackets.

**ENTER 378** Tel: 01394 462122  
ipsearch.com/enquiry

## Fast acting



The Envirovalve fast-acting shut-off valve from **Darcy Products** is a stand alone, cost effective means of automatically preventing pollutant from flowing into the drainage system by isolating at-risk areas where spills/leaks are likely.

Designed to fit into manhole chambers or access points, it is simple to install and maintain, requires little or no civil work and is said to offer savings of 25 to 33% when compared with the cost of installing conventional penstocks or automated gate valves.

Available with various activation options, the valve has an inflatable oil and chemical resistant bladder that, when activated, will shut off flow through 100 to 1000mm pipe.

**ENTER 379** Tel: 01732 843131  
ipsearch.com/enquiry