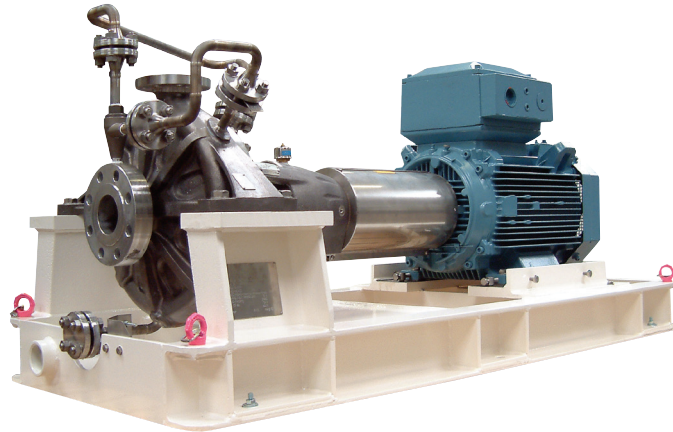


## API 610 OH2 PROCESS PUMPS

Amarinth A Series pumps are designed to API 610 11th edition specifications for the Petrochemical, Chemical and Oil & Gas markets and are fully ATEX compliant. All API materials are available as standard to match your application, plus bespoke options including NACE compliant materials. Standard Documentation, Testing and NDT packs are offered. Alternatively bespoke packages can be tailored to fit your exact requirements.

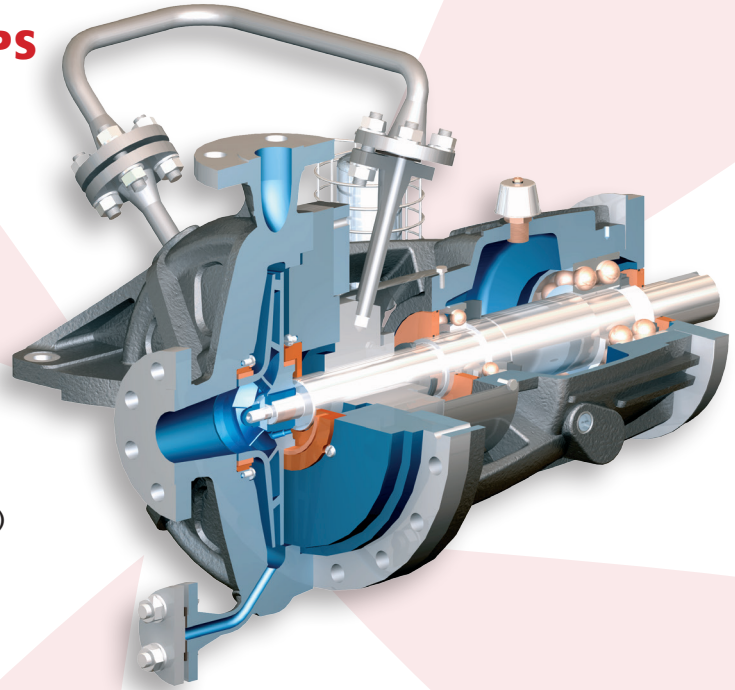


<b>General description</b>	A range of OH2 single stage, centreline mounted centrifugal end suction pumps with centreline discharge manufactured in a variety of alloys.
<b>Construction</b>	Back pullout design with metal to metal fits
<b>Design methodology</b>	Advanced computer techniques including 3D modelling, FEA & CFD
<b>Design standards</b>	API 610 11th : 2010 / ISO 13709 : 2010 ATEX EC-Directive 94/9/EC
<b>Design pressure rating</b>	51.8 bar g @ 38°C
<b>Suction pressure rating</b>	20 barg (standard construction) 40 barg (heavy duty construction)
<b>Temperature rating</b>	-40°C to 200°C (standard construction) -40°C to 370°C (with cooling)
<b>Performance envelope</b>	
<b>Flowrate</b>	Up to 1500 m <sup>3</sup> /h
<b>Differential head</b>	Up to 300 m
<b>Speed</b>	Up to 3600 rpm
<b>Configurations</b>	Long coupled pump Bareshaft pump Rotating assembly
<b>Frame sizes</b>	040x025x145 to 300x200x510
<b>Design life</b>	30 years (3 years uninterrupted operation)

# API 610 OH2 PROCESS PUMPS

## key features

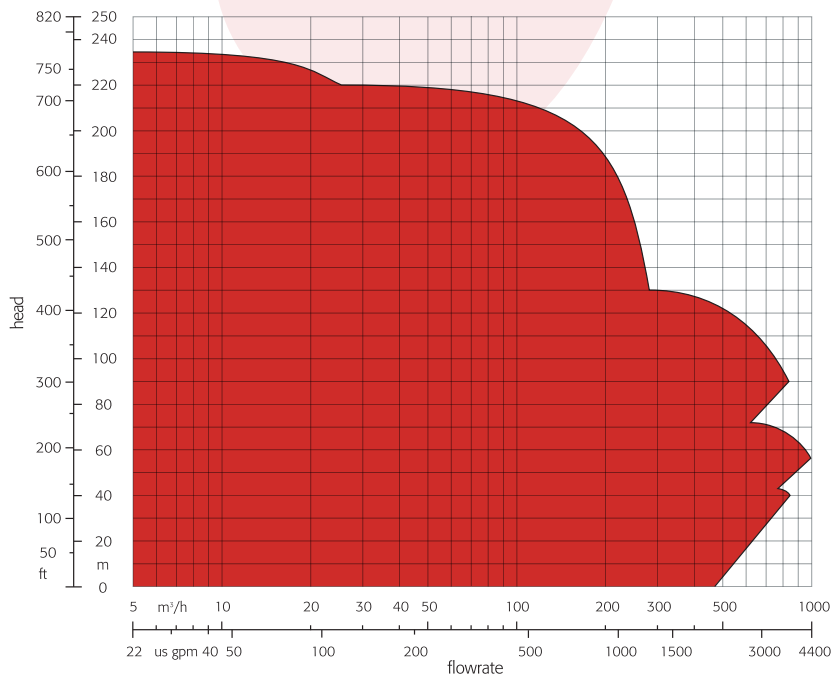
- OH2 single stage centreline mounted centrifugal pumps.
- 51 bar pumps to API 610 (11th edition) & ATEX compliance, on application
- -40°C to 370°C temperature applications
- Shrouded or Semi-Open Impellers
- A range of alloys available on request including NACE compliant materials
- Tested to API 610 / ISO 13709 procedures – Head, Flow, NPSH, Noise & Vibration
- A range of API 682 Seals & systems (PED compliant)
- Grouted and Non-Grouted Baseplates to API 610 dimensions



## materials

Materials	Casing	Impeller
<b>A8 SS 316L / SS 316L</b>	ASTM A351 CF 3M	ASTM A351 CF 3M
<b>I1 Cast iron / Cast iron</b>	ASTM A278 Class 30	ASTM A278 Class 30
<b>S8 Carbon steel / SS 316L</b>	ASTM A216 WCB	ASTM A217 CF 3M
<b>S6 Carbon steel / 12% Cr SS</b>	ASTM A216 WCB	ASTM A217 Gr CA15
<b>D1 Duplex SS / Duplex SS</b>	ASTM A890 Gr 4A (UNS J92205)	ASTM A890 Gr 4A (UNS J92205)
<b>D2 Super Duplex SS / Super Duplex SS</b>	ASTM A890 Gr 5A (UNS J93404)	ASTM A890 Gr 5A (UNS J93404)
<b>Hastelloy B / Hastelloy B</b>	ASTM A494 Gr N 7M	ASTM A494 Gr N 7M
<b>Hastelloy C / Hastelloy C</b>	ASTM A494 Gr CW 12MW	ASTM A494 Gr CW 12MW
<b>Monel / Monel</b>	ASTM A494 Gr M35 1	ASTM A494 Gr M35 1
<b>Titanium / Titanium</b>	ASTM B367 Gr C2	ASTM B367 Gr C2
<b>Customer specified</b>	Other alloys available on request including NACE compliant materials	Other alloys available on request including NACE compliant materials

## A Series hydraulic coverage



## typical applications

- Amine
- Boiler feed
- Booster pump duties
- Caustic transfer
- Export
- Fuel transfer
- Low NPSH capabilities
- LPG
- Potable water
- Produced water
- Refinery process
- Seawater duties



**Amarinth**

Bentwaters Parks, Rendlesham, Woodbridge,  
Suffolk IP12 2TW. United Kingdom  
tel: +44 (0)1394 462 120  
fax: +44 (0)1394 462 130  
e-mail: enquiries@amarinth.com  
web: www.amarinth.com



Certificate Number 3720  
ISO 9001, ISO 14001,  
OHSAS 18001