



ATEX up-grade for your Girdlestone pumps - made easy by Amarith

Now you can extend the life of your Girdlestone pumps with an Amarith ATEX compliant rotating assembly.

- Amarith's simple upgrade will enhance your plant safety and ensure your pumps meet the new regulations.
- Directly interchangeable with existing Girdlestone bearing brackets and without the need of modification,
- Amarith can now save you unnecessary time, expense and worry.

- **Compliance**

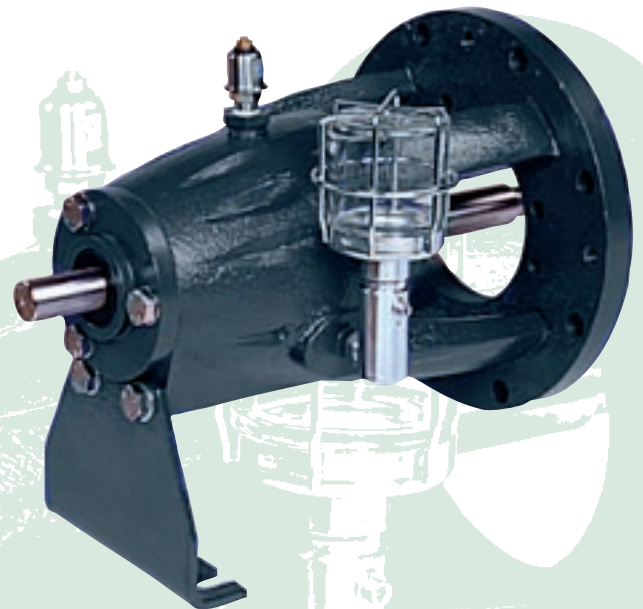
If you are using Girdlestone pumps in hazardous applications such as gas, mining, oil, pharmaceutical and chemical production, you can now easily comply with forthcoming EU regulations with the Amarith ATEX upgrade.

The assembly is part of Amarith's new 'C' Series centrifugal pumps (that meet the requirements of the latest EU Directive 94/9/EC) for ATEX (AT-mosphere EX-plosive). Amarith's pumps (and parts) are extremely robust, and available in castable and machinable alloy, for the greatest compatibility with your particular application and process environment.

- **Quality**

Manufactured and assembled in the UK, Amarith's ATEX upgrade is designed according to the ISO5199 construction standard and carry a CE mark. We are a quality assured company to ISO 9001-2000.

By upgrading your Girdlestone pumps with our ATEX Rotating Assemblies, you can future-proof your investment, and simplify safe working practices.



"The impact of ATEX is a serious issue for all pump users and there seems to be a lot of confusion in the industry regarding the scope and timing of the legislation. We have our own expert in this field who is available for consultation by our customers, if required".

Oliver Brigginsbaw MD Amarith Ltd

● Construction

Compared with the original Girdlestone Rotating Assembly, the Amarith upgrade features:

- One piece design for maximum shaft run-out
- Stiffer shaft design with improved impeller fixings
- Machined bearing abutments for superior bearing alignment
- Heavy duty dual angular contact axial bearings and deep groove radial ball bearing as standard
- Improved oil lubrication system for cooler running
- AES mechanical seals and optional Magtecta bearing isolators
- Optional mounting points for vibration monitoring
- Provision of a lifting eye for ease of maintenance.



Fully tested to meet the exacting requirements of ATEX, all Amarith rotating assemblies have been tested, ensuring your plant is compliant for the future.

● Interchangeable with Girdlestone pumps

You can easily and quickly fit the Amarith ATEX upgrade into an existing Girdlestone pump casing, using the same impeller and fixings. No further changes are required to the pipework, baseplate, coupling or motor.

Amarinth offers you a hassle-free way of saving expensive capital costs, whilst the speed of conversion significantly reduces the risk of downtime.

● Installation

As part of the service and commitment to you, whatever your individual requirements, Amarith have extensive technical expertise on hand to help you with the process of selecting and installing the ATEX upgrade you need.



For a no obligation discussion on how we can help you achieve significant savings in installation costs and downtime, call our sales team on **+44 (0)1394 462 120** or visit our website at www.amarith.com

Amarinth Ltd,
Bentwaters Parks,
Rendlesham,
Woodbridge,
Suffolk. IP12 2TW
United Kingdom



tel: +44 (0)1394 462 120
fax: +44 (0)1394 462 130
e-mail: enquiries@amarinth.com
web: www.amarith.com